



# KANAKA BAR INDIAN BAND

Annual General Meeting  
August 19, 2018

# OBJECTIVE OF TODAY'S MEETING

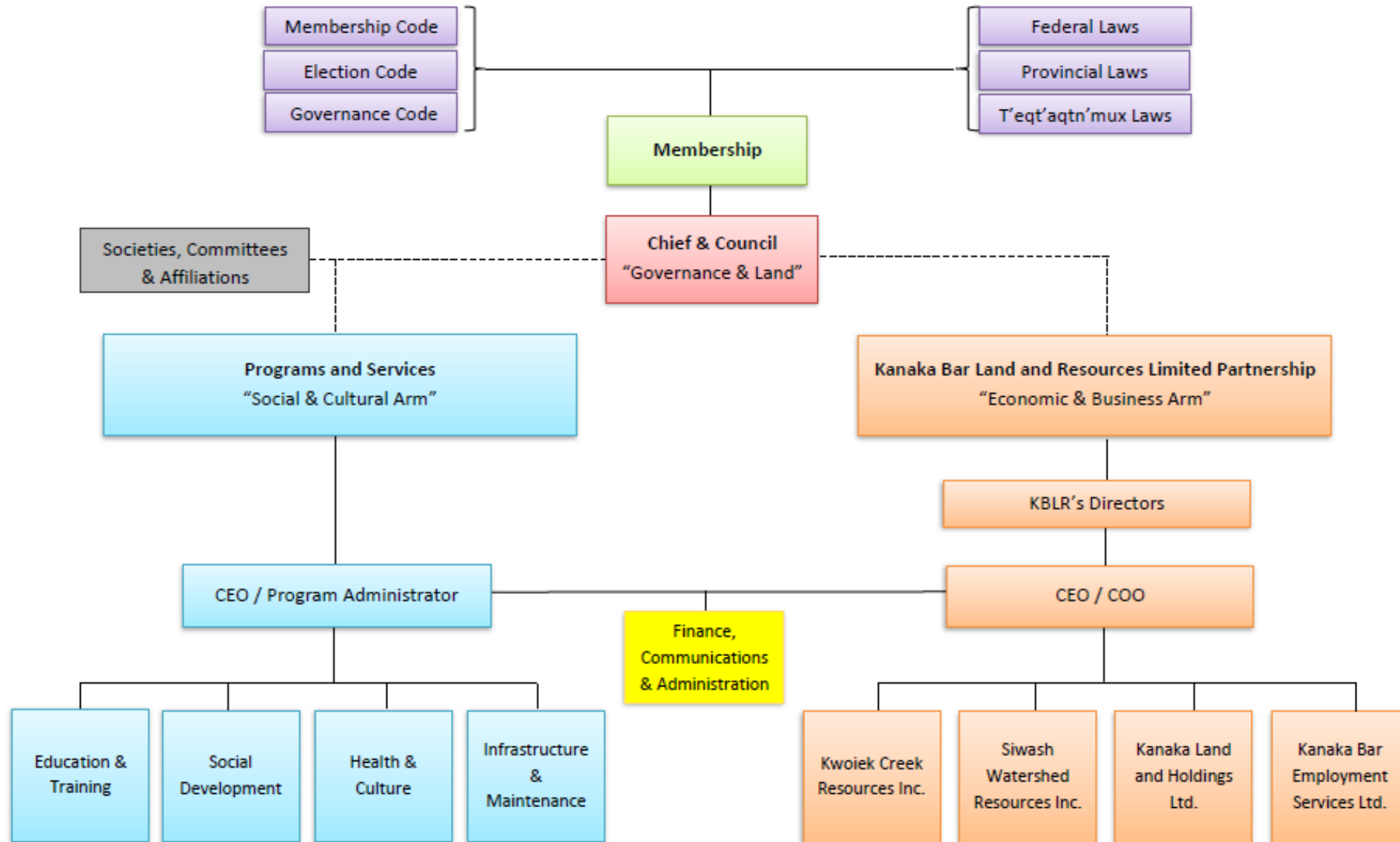
- Review year-ended March 31, 2018
- Management's Report
- Auditor's Report
- 10-Year Grant Funding Opportunity
- Call for Directors
- Appointment of Auditors for 2018-19
- Question and Answers

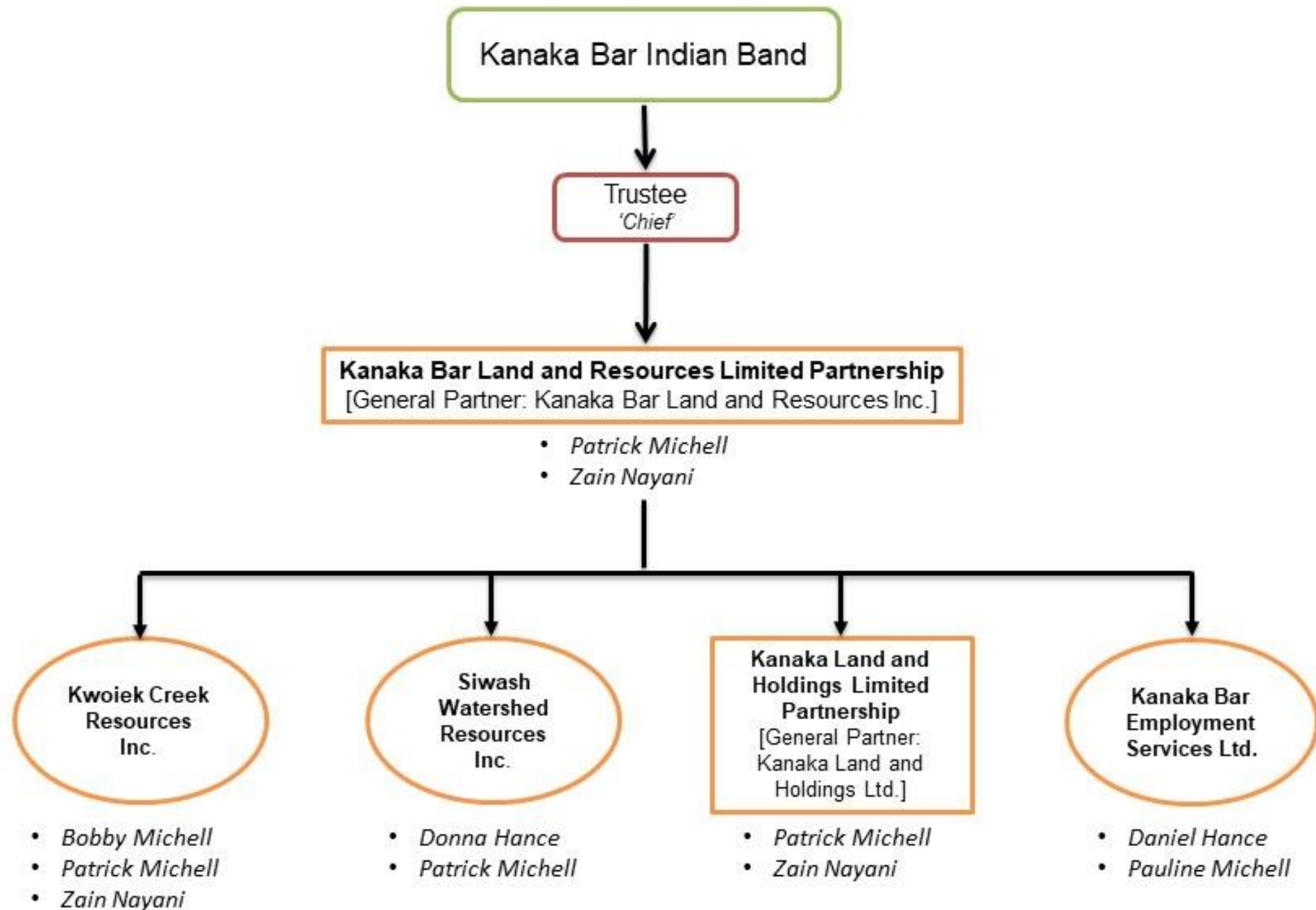


# Kanaka Bar Indian Band

Organization Chart

As at May 2, 2016





# LEADERSHIP AND MANAGEMENT

Chief Patrick, Councillors Bobby, Daniel, Donna and Pauline

Larry Thomas

Lee Joy

Zain Nayani

Zain Nayani

April

February

August

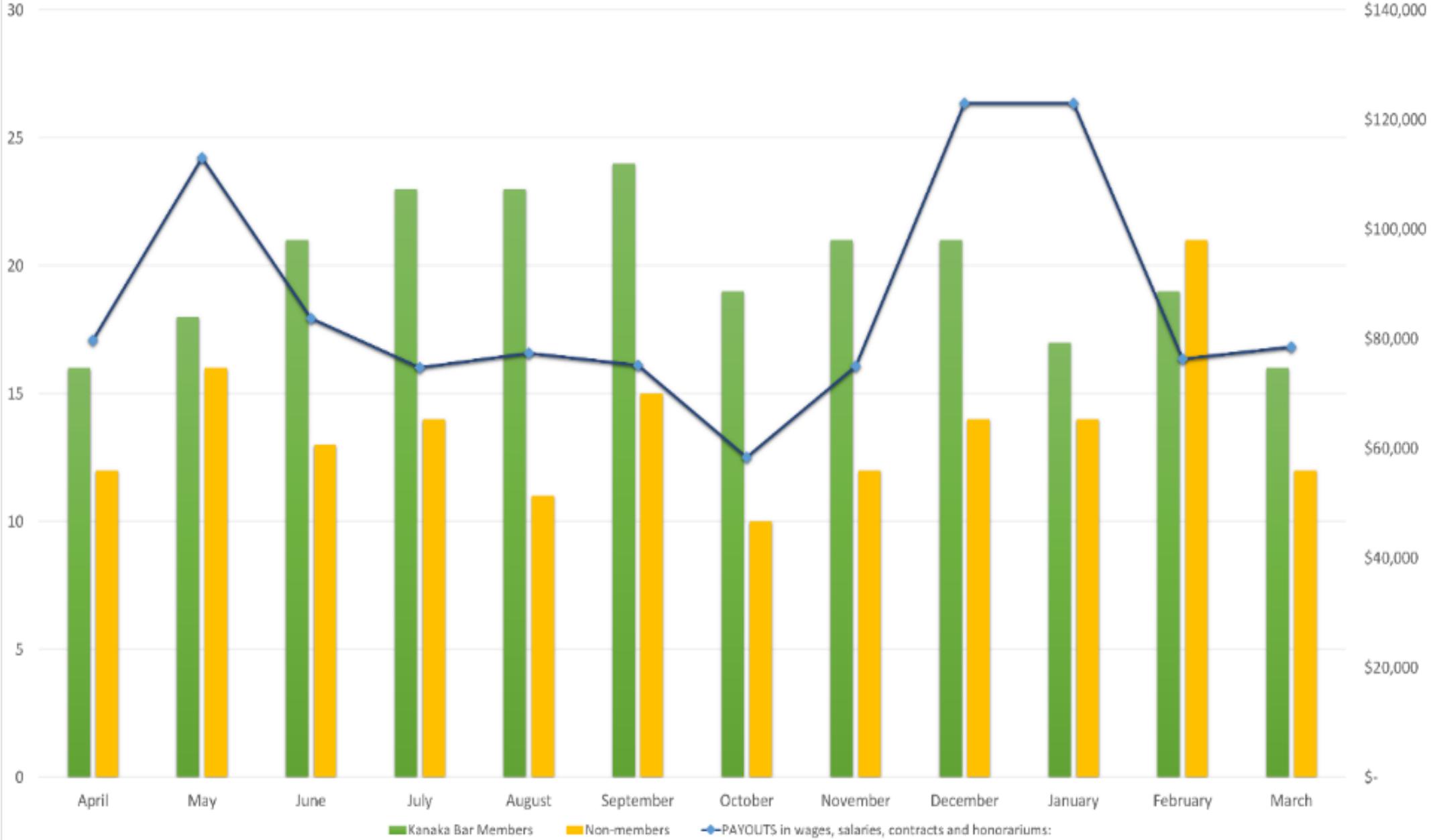
March

# PEOPLE...

- We paid out around \$1m in honorariums, wages, salaries and contracts to various people who worked with us during 2017-18
- On average, we paid \$87,000 a month and created 34 opportunities for people
- Leadership was paid \$122,876
- Management was paid \$171,998
- Rest was paid to local staff and contractors who worked in various departments and business entities of the community



### Work Opportunities at Kanaka Bar



# WHAT DID WE DO?

## Employment & Community Readiness

- Office
- Field
- Commercial
- Retail

## Food

- Meats
- Fruits
- Vegetables
- Beverages

## Energy


- New builds
- Renovations
- Demand-side management
- Production

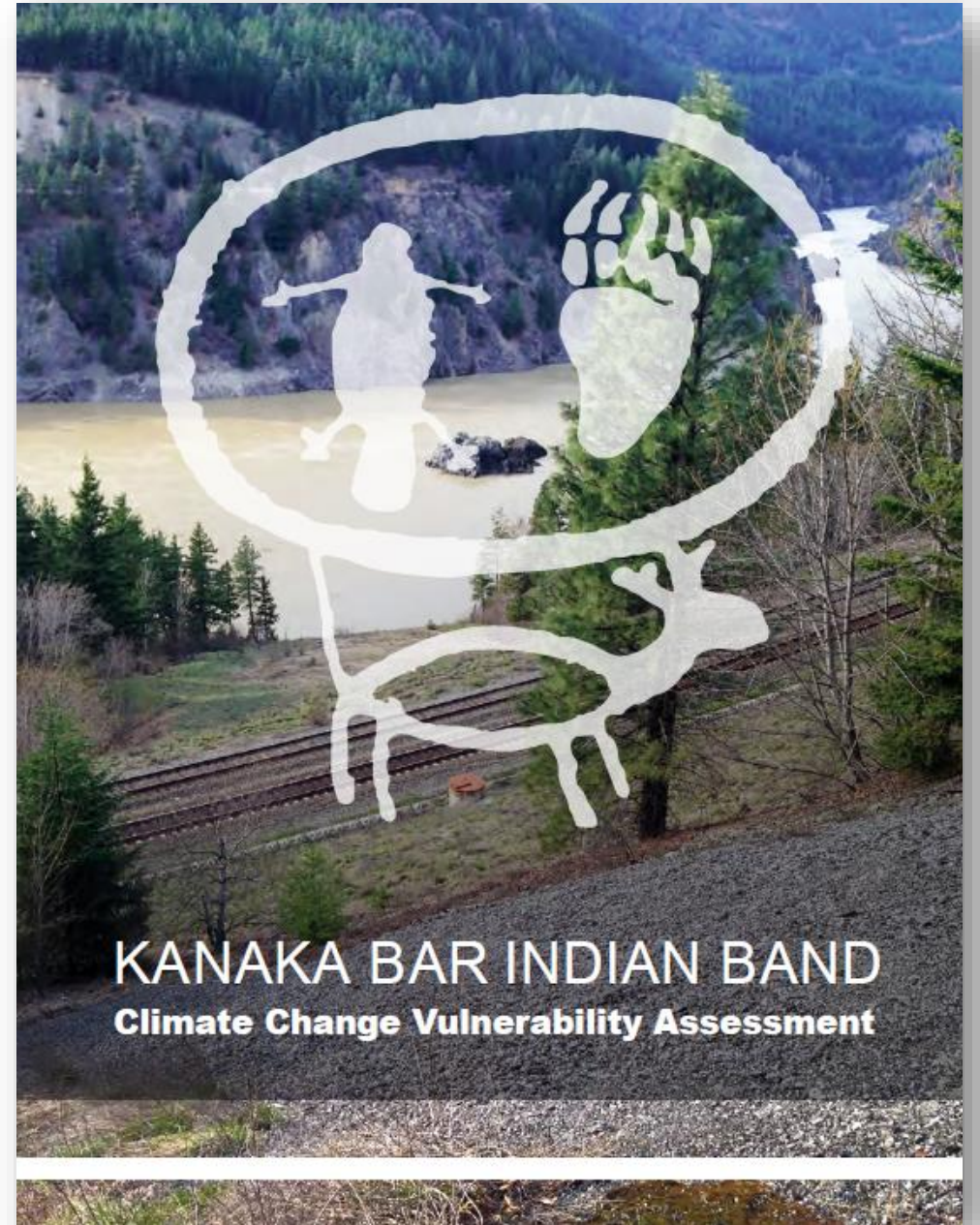
## Financial

- Royalty
- Taxation
- Revenue Sharing Agreements
- Business Revenues



# WHY THOUGH?

- The answer can be found in 
- Please check out the final report on:  
<http://www.kanakabarband.ca/downloads/climate-change-vulnerability-assessment.pdf>



# KEY HIGHLIGHTS FOR 2017-18...

## Council

- New Sub-division for \$2.4m
- Siwash's Preliminary Design and Engineering Report
- Off-reserve Land and Resource Use Plan
- Climate Change Vulnerability Assessment
- Highway-1 Strategy
- Governance Manual

## Administration

- Finalized financial statements 10 days before due date
- Grew 7<sup>th</sup> Generation Fund by 2% (\$11k)
- Relied on ISC for 47% of the total budgets
- Increased interest revenues by 153%
- Workplace Assessment

## Programs & Services

- 11 youth trained during SYEP-2017
- Post-secondary support to 8 students
- 88 Health workshops, clinics and events attended by 556 participants
- Community Garden Initiative - more chickens, bees and produce!
- Firefighting Courses

## Economic & Business

- WTP upgrades for \$70k
- 10ha of On-reserve and 2ha of Private Land Fuel Treatment
- 14 home renovations
- 7.2kW Solar Tracker Project
- Electrical Assessments for all buildings
- Fire Safety

# FINANCIAL PERFORMANCE — AT A GLANCE

	KBIB	KBLR LP	KBLR Inc	KCR Inc	SWR Inc	KLH LP	KLH Ltd	KBES Ltd
Revenues	2,583,702	652,516	32	698,584	75	290,413	8	421,376
Expenses	4,425,510	413,274	-	787,745	11,534	217,133	-	421,414
<b>Net Income</b>	<b><u>(1,843,398)</u></b>	<b><u>239,242</u></b>	<b><u>32</u></b>	<b><u>(89,161)</u></b>	<b><u>(11,459)</u></b>	<b><u>73,280</u></b>	<b><u>8</u></b>	<b><u>(38)</u></b>
Assets	9,158,282	1,876,763	78	4,214,776	103,314	1,210,418	9,803	109,777
Liabilities	1,178,874	250	2	3,386,759	30,293	595,967	9,801	110,008
<b>Equity</b>	<b><u>7,979,408</u></b>	<b><u>1,876,513</u></b>	<b><u>76</u></b>	<b><u>828,017</u></b>	<b><u>73,021</u></b>	<b><u>614,451</u></b>	<b><u>2</u></b>	<b><u>(231)</u></b>

# WHAT'S NEXT...

Economic Development Theme		Year 1 2016-2017	Year 2 2017-2018	Year 3 2018-2019	Year 4 2019-2020	Year 5 2020-2021
1	<b>Employment Self-Sufficiency and Community Readiness</b>	<ul style="list-style-type: none"> <li>Launch Seventh Generations Trust</li> <li>Implement strategies that introduce Kanaka Bar membership to land and resource uses.</li> </ul>	<ul style="list-style-type: none"> <li>Strategic investment into Kanaka's youth</li> <li>Invest in the development and implementation of a Kanaka Bar library.</li> </ul>	<ul style="list-style-type: none"> <li>Provide hands on experience to members that are eager to work</li> </ul>	<ul style="list-style-type: none"> <li>Provide hands on experience to members that are eager to work</li> </ul>	<ul style="list-style-type: none"> <li>Review and update economic development plan</li> </ul>
2	<b>Financial Self-Sufficiency</b>	<ul style="list-style-type: none"> <li>Develop Siwash Creek Hydropower Project</li> <li>Implement Community Housing Policies</li> </ul>		<ul style="list-style-type: none"> <li>Complete water bottling feasibility study</li> </ul>	<ul style="list-style-type: none"> <li>Complete large wind power feasibility study</li> </ul>	<ul style="list-style-type: none"> <li>Review and update economic development plan</li> </ul>
3	<b>Energy Self-Sufficiency</b>	<ul style="list-style-type: none"> <li>Develop pilot solar project</li> <li>Implement home energy efficiency upgrades</li> </ul>	<ul style="list-style-type: none"> <li>Raise financial resources to implement other community energy projects                             <ul style="list-style-type: none"> <li>Micro-hydro</li> <li>Micro-wind</li> </ul> </li> </ul>	<ul style="list-style-type: none"> <li>Develop larger net metering clean energy project(s) to support energy self-sufficiency</li> </ul>		<ul style="list-style-type: none"> <li>Review and update economic development plan</li> </ul>
4	<b>Foundational Community/Infrastructure Development to Support Self-Sufficiency</b>	<ul style="list-style-type: none"> <li>Acquire key off-reserve lands of interest including:                             <ul style="list-style-type: none"> <li>Kanaka Bar Restaurant lands</li> <li>Lot 4</li> <li>Crown lands of interest</li> </ul> </li> </ul>		<ul style="list-style-type: none"> <li>Confirm desired development on key lands of interest off-reserve with a highest and best use study</li> <li>Develop site and conceptual plans for select properties</li> </ul>	<ul style="list-style-type: none"> <li>Initiate land development project #1                             <ul style="list-style-type: none"> <li>HWY 1 redevelopment</li> <li>High density housing (Apartments/alternative housing) and/or</li> <li>Elders complex</li> </ul> </li> </ul>	<ul style="list-style-type: none"> <li>Initiate land development project #2</li> <li>Review and update economic development plan</li> </ul>
5	<b>Food Self-Sufficiency</b>	<ul style="list-style-type: none"> <li>Develop community garden (permaculture project)</li> <li>Provide educational resources (books, soil, seedlings) to members who wish to do home gardens</li> <li>Establish a community bee hive</li> </ul>	<ul style="list-style-type: none"> <li>Assist members to prepare residential backyard gardens</li> <li>Plant fruit trees throughout community</li> </ul>	<ul style="list-style-type: none"> <li>Prepare lands for larger agricultural venture (as identified in the Land Use Plan)</li> <li>Establish community canning infrastructure</li> </ul>	<ul style="list-style-type: none"> <li>Use prepared lands for community agriculture venture</li> <li>Invest in greenhouse(s) if feasible</li> </ul>	<ul style="list-style-type: none"> <li>Review and update economic development plan</li> </ul>



**QUESTIONS?**